



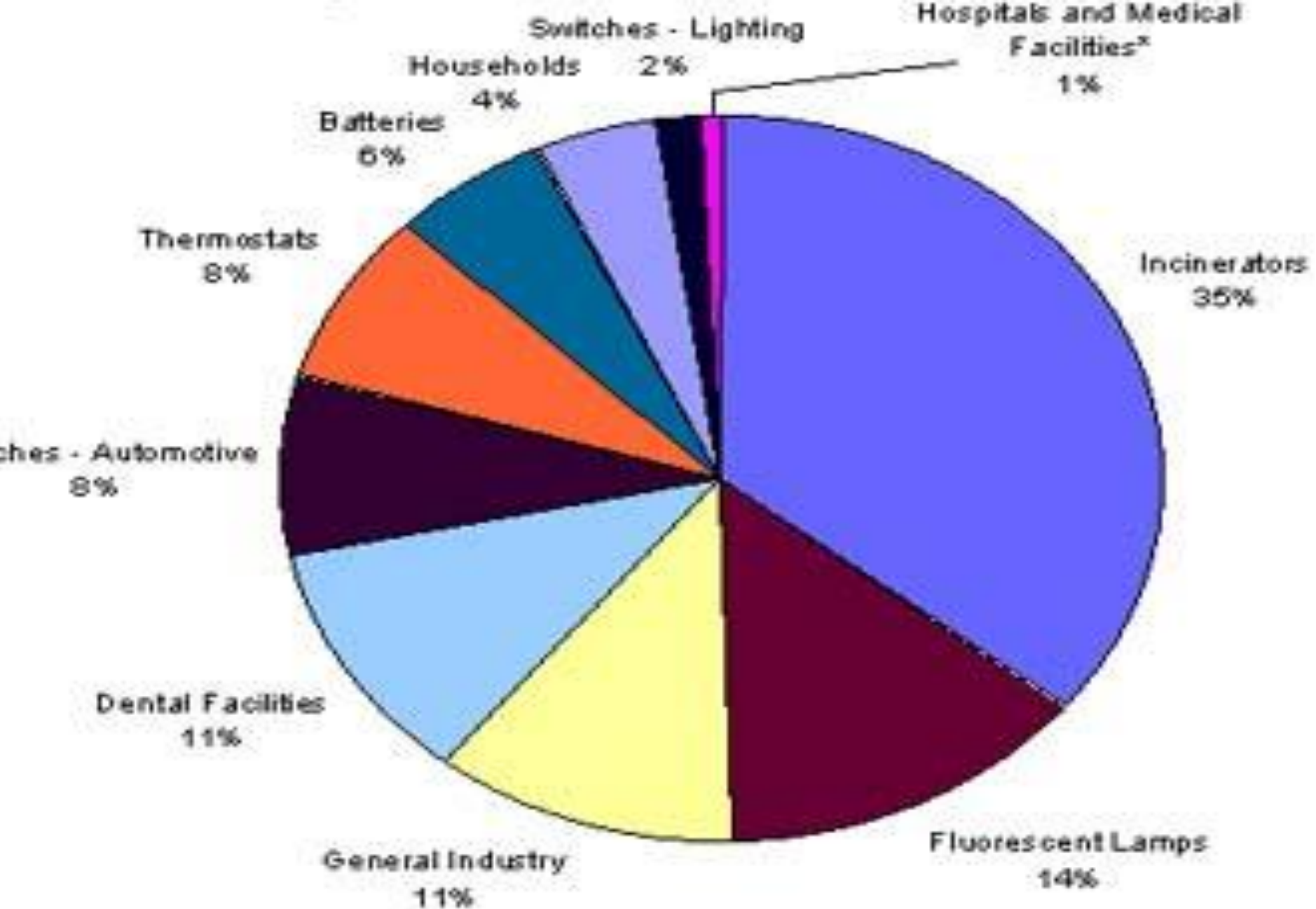


**The name of the first story is ‘ The lake of the mountain spirits.’**



- The **second story** is funny one.  
It was the 'elusiveness' of mercury.

- The **third story** is about Hahnemann's son and hence more interesting. Friedrich Hahnemann brought out many of the symptoms of Mercury proving. He was extremely restless and always on the move. He finally travelled to U.S.A. and then disappeared without trace as if to depict the personality of Mercury.
- These stories depict three grand characters of Mercury – **destructiveness, elusiveness and restlessness.**
- The potentized dynamic effects depict the same to meet acute and chronic cases, to meet all miasms in its coverage.





## Name of drugs

## Abbreviations

- |                                   |            |
|-----------------------------------|------------|
| • 1. Mercurius Solubilis --       | Merc       |
| • 2. Mercurius aceticus --        | Merc-a     |
| • 3. Mercurius auratus --         | Merc-aur   |
| • 4. Mercurius biniodatus --      | Merc-I- r  |
| • 5. Mercurius bromatus --        | Merc-br    |
| • 6. Mercurius corrosivus --      | Mer-c      |
| • 7. Mercurius cum Kali --        | Merc-k-i   |
| • 8. Mercurius cyanatus --        | Merc -cy   |
| • 9. Mercurius dulcis, calomel -- | Merc-d     |
| • 10. Mercurius iodatus flavus -- | Merc-I-f   |
| • 11. Mercurius Methylenus -      | Merc- meth |

• 12. Mercurius Nitrosus	Merc-ns
• 13. Mercurius Oxydatus	Merc-prr
• 14. Mercurius phosphorus	Mercp
• 15. Mercurius pracipitatus albus	Mercpra
• 16. Mercurius pracipitatus flavus	Merc-pr-f
• 17. Mercurius Sulphocy- anatus	Merc-s-cy
• 18. Mercurius Sulphuratus niger	Merc-sul-n
• 19. Mercurius Sulphuratus ruber	Cinnabaris
• 20. Mercurius Sulphuricus	Merc-sul
• 21. Mercurius tanicus	Merc-tn
• 22. Mercurius vivus	Merc-v
• 23. Mercurialis perennnis	Merl



- 24. Merc-i-r = Mercurius biniodatus = mercurius iodatus ruber
- 25. Merc-c = Mercurius cor = Mercurius sublimes
- 26. Merc-k-i = Mercurius cum kali = Mercurius biniodatus cum kali iodato
- 26. Merc-pr-r = Mercurius Oxydatus = Mercurious precip. ruber
- Merc-sol is not a pure merc preparation, it contains ammonia & nit-acid.
- Cinnabaris, bin-iodide, proto-iodide, merc-cor, merc-sol, merc-vivus are the most frequently used.

- ☯ Mercurius is a fascinating type.
- ☯ It is probably harder to 'get a handle'



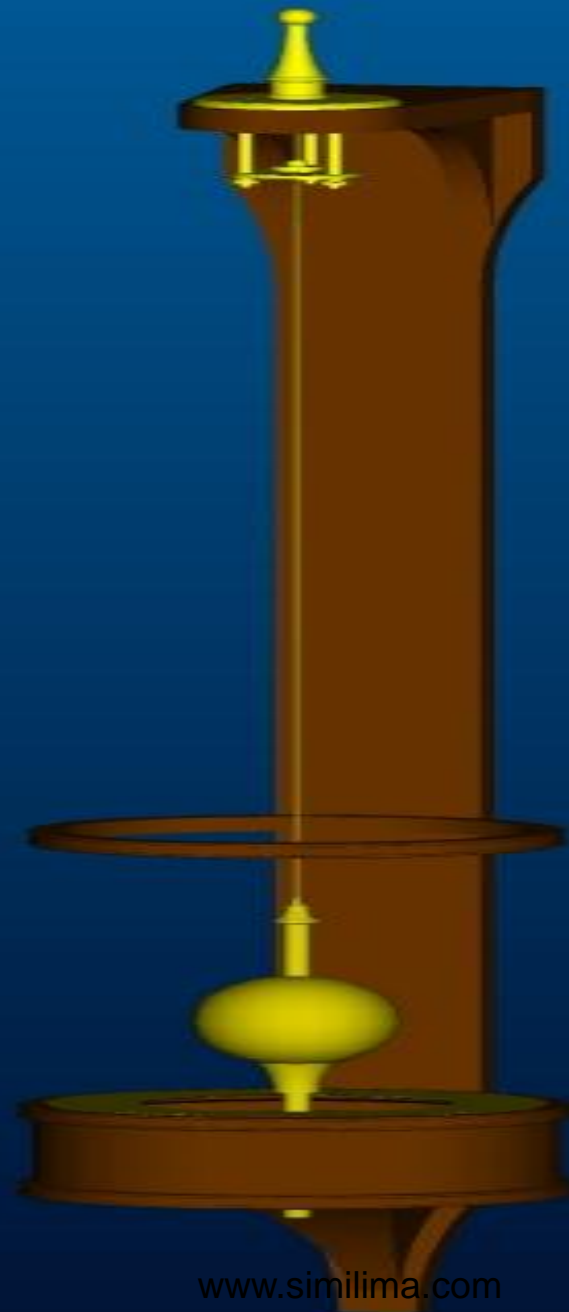
Dream

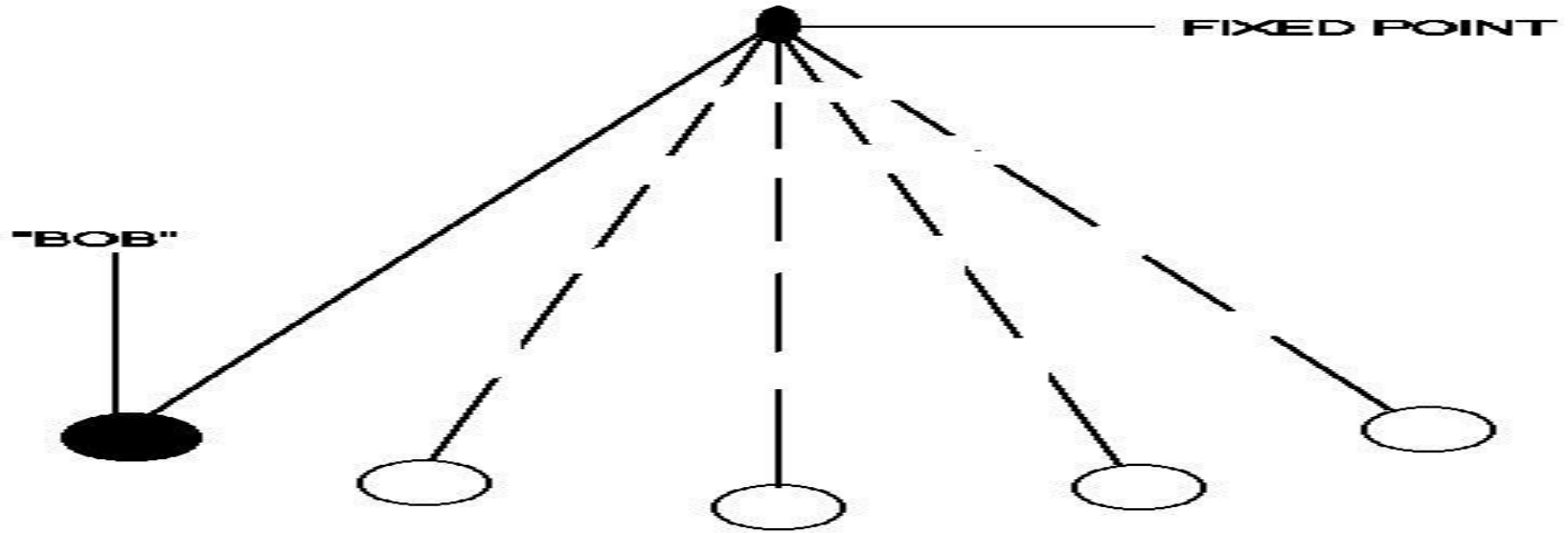


[www.similima.com](http://www.similima.com)

Real

10





- Introvert
- Optimist
- Pragmatist
- Moralist

Extrovert  
Pessimist  
Idealist  
Opportunist.

- The Mercurial mind takes snapshots of the world before it, and instantaneously classifies the contents of the picture, and then files it away.
- This can lead to hasty judgments and even prejudice, but having said that, the perception of the Mercurial mind is often so quick that it arrives at accurate conclusions in apparently impossibly short bites of time.
- Detachment & Alienation.

- The fool





- The trickster





- Ritual & Magical thinking --

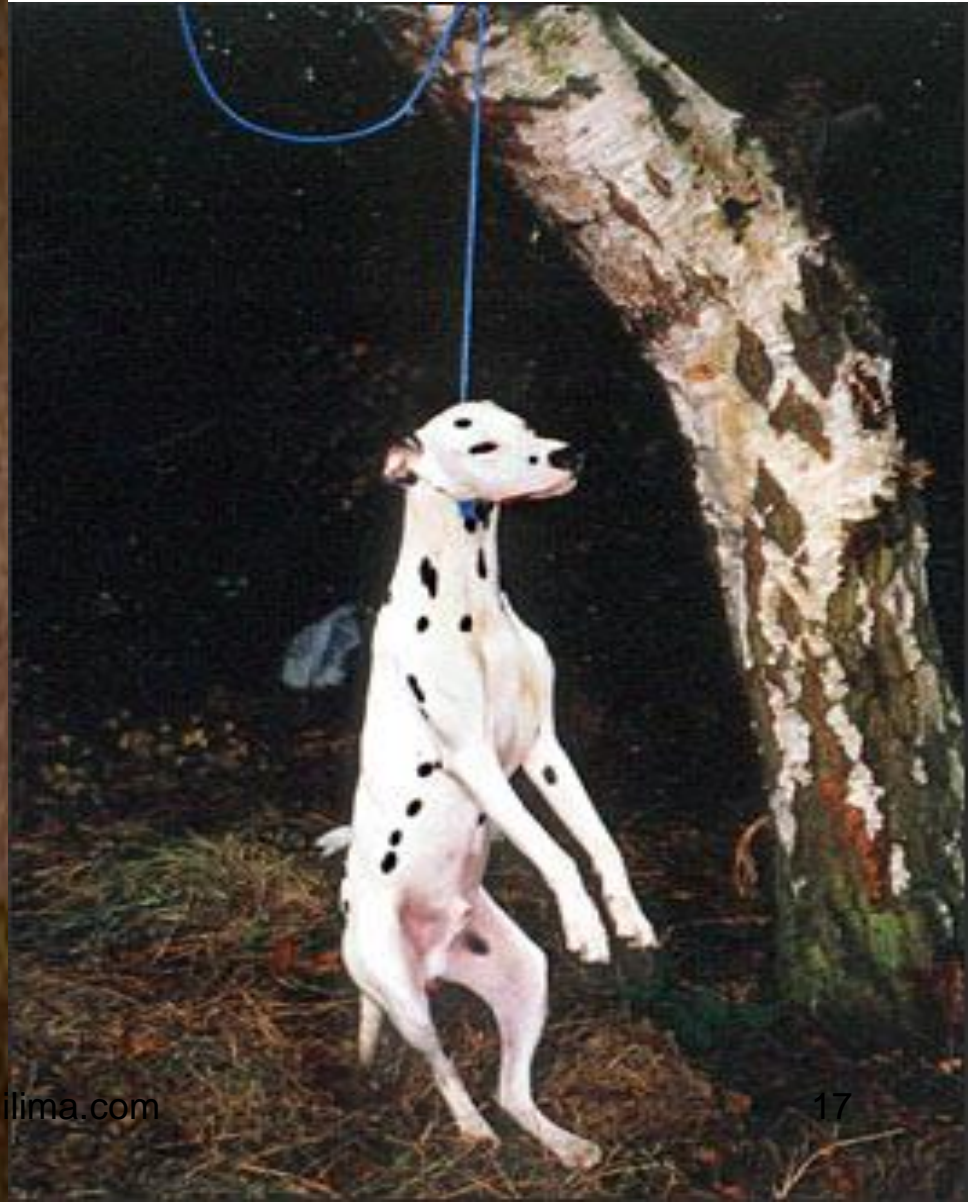


[www.similima.com](http://www.similima.com)





- Megalomania & Cruelty—



# Periodic Table of the Elements

- hydrogen
- alkali metals
- alkali earth metals
- transition metals
- poor metals
- nonmetals
- noble gases
- rare earth metals

# Periodic Table of the Elements

hydrogen

alkali metals

alkali earth metals

transition metals

poor metals

nonmetals

noble gases

rare earth metals

1 H																	2 He				
3 Li	4 Be															5 B	6 C	7 N	8 O	9 F	10 Ne
11 Na	12 Mg															13 Al	14 Si	15 P	16 S	17 Cl	18 Ar
19 K	20 Ca	21 Sc	22 Ti	23 V	24 Cr	25 Mn	26 Fe	27 Co	28 Ni	29 Cu	30 Zn	31 Ga	32 Ge	33 As	34 Se	35 Br	36 Kr				
37 Rb	38 Sr	39 Y	40 Zr	41 Nb	42 Mo	43 Tc	44 Ru	45 Rh	46 Pd	47 Ag	48 Cd	49 In	50 Sn	51 Sb	52 Te	53 I	54 Xe				
55 Cs	56 Ba	57 La	72 Hf	73 Ta	74 W	75 Re	76 Os	77 Ir	78 Pt	79 Au	80 Hg	81 Tl	82 Pb	83 Bi	84 Po	85 At	86 Rn				
87 Fr	88 Ra	89 Ac	104 Unq	105 Unp	106 Unh	107 Uns	108 Uno	109 Une	110 Unn												

58 Ce	59 Pr	60 Nd	61 Pm	62 Sm	63 Eu	64 Gd	65 Tb	66 Dy	67 Ho	68 Er	69 Tm	70 Yb	71 Lu
90 Th	91 Pa	92 U	93 Np	94 Pu	95 Am	96 Cm	97 Bk	98 Cf	99 Es	100 Fm	101 Md	102 No	103 Lr

- ∞ Has the power to take responsibilities, be the leader & to maintain the position.
- ∞ Constant attack from enemies around him to take away the power.
- ∞ Unable to maintain it.
- ∞ Unsuccessful efforts.
- ∞ Key – responsibility, leadership, power, handicapped, dependence, attack & defense, performance.

- ♠ Overdoing the power : dictatorship
- ♠ Exaggerated arrogance
- ♠ Exaggerated organisation
- ♠ Decay of power
- ♠ Exaggerated responsibility
- ♠ Repeating strategies to hold on to power
- ♠ Repeating tricks to hold on to power
- ♠ Enemies of the king
- ♠ Everybody is an enemy & they are totally alone.

- ♠ Exaggerated feeling of loneliness.
- ♠ Enemies have to be dealt with dictatorial measures.
- ♠ Decline of empire.
- ♠ Enemies of organisation : suspicion
- ♠ Disturbed relationships
- ♠ Decline of power leads to anti social behavior.

# MONOGRAM

- Congestive. Catarrhal. Exudative.
- Ulcerative. Suppurative. Destructive
- Glandular. Scrofulous. Scorbutic.
- Anemic. Rheumatic. Offensive
- Sensitive. Tremulous. Dropsical .
- Agile. Chaotic. Debilitated. Syphilitic



# 1. Congestive:

- *Merc* is basically inflammatory group of remedies.
- Every inflammation begins with congestion and *Merc* has it forcefully in its pathogenesis.
- This congestiveness has to be differentiated from *Aco*, *Bell* or *Ferr-ph*.
- These three drugs have congestion in their first stage of inflammation.
- *Merc* presents a furtherance of activity where suppuration has supervened.
- An abscess in *Merc* is of spreading congestion-  
more red, more painful, more throbbing, and  
with adjacent lymphadenopathy.

## 2. Catarrhal:

- *Merc* causes inflammation of mucous membranes resulting in profuse, thin, slimy, acrid, burning, foul or thick greenish-yellow discharges.
- *Merc* covers simple to malignant catarrhs in its pathogenesis.

## 3. Exudative:

- Exuding the ichorous fluid, pus etc. through affected lesions like boils, abscesses, carbuncles, sinuses, fistulae etc. is the characteristic of *Merc*.
- The exudation is usually offensive in nature.

## 4. Ulcerative:

- *Merc* has **ulcerations**; of the mucous membranes, esp. of mouth and throat.
- The **syphilitic miasmatic** dimension is responsible for **recurrent and non-healing ulcerations**; ulcers based on deep pathologies, or metabolic basis. **Syphilitic phagadenic ulcers.**

## 5. Suppurative:

- Inflammation in *Merc* doesn't stop at the level of congestion.
- Inflammatory action is intensely acute and violent and rapidly tends to septic disorganization.
- It is as if little resistance is offered by the system. Defective mesenchymal system and phagocytosis turns the condition into suppuration.
- *Merc* has tendency to pus formation and the pus is thin, green, putrid; streaked with blood.
- Suppuration in glands, ulcers or even internal vital organs like lungs (e.g. empyema) or kidneys (e.g. peri-nephric abscess or pyelonephritis) comes within the range of *Merc*.

## 6. Destructive:

- *Merc* transforms healthy cells into decrepit, inflamed and necrotic wrecks.
- *Merc* is **destructive** both at **body and mind** levels.
- Its lesions resemble those of syphilis.
- *Merc's action* is similar to that of the **toxins of infectious diseases**.
- Inflammations of malignant types, and prostration.
- Appropriate *Merc* salt can be thought of in cases where perforation threatens.

## 7. Glandular:

- *Merc* has increased glandular activity, esp. of salivary and mucous glands.
- Lymphatic system is esp. affected with all the membranes and glands.
- *Merc* has concomitant lymphadenopathy with skin lesions like boil, abscess, ulcer etc.
- Syphilitic miasm is responsible for even malignant glandular affections and fevers.
- Based on scrofulous diathesis, it also covers tubercular glandular affections. Chronic suppurating glands; cold abscesses are dealt with *Merc*.

## **8. Scrofulous:**

- Tuberculous disease of lymphatic nodes and of bone, with slowly suppurating abscesses.
- *Merc* decomposes the blood, producing a profound **anemia**.
- It thus affects the nutrition and prepares a ground for scrofulous affections.
- Syphilitic activity further leads to **cachexia**.

## **9. Scorbutic:**

- *Merc* has **spongy and bleeding gums**.
- When the general condition is impaired and metabolism affected because **of malnutrition**, scorbutis may get developed.
- **Scorbutis** may be a precursor of metabolic diseases like DM.



## 10. Anaemic:

- *Merc* through decomposition of blood, and through bone-marrow depression causes profound or aplastic anemia.
- Hemorrhages, metabolic disorders, hepatic and renal toxicity cause anemia.
- Hence *Merc* constitution is emaciated, pale with dark ring around eyes.

## 11 . Rheumatic:

- **Rheumatic diathesis** is one of the features of *Merc* group.
- It has both acute and chronic dimensions.
- *Mercs* are sensitive to both heat and cold - human barometers and they come down with acute joint swellings and pains consequent to weather changes.  
'Redness' indicates *Merc*.

## 12. Offensive

- *Merc* is filthy, mentally as well as physically.
- All discharges **smell horribly**.
- the decomposition, the debris, the slough, the suppuration; smell emanates from the body.
- *Mercs* are, hence, **recognized to an observant physician**.

## 13. Sensitive

- *Mercs* are very sensitive to **weather changes**, hence termed as '**human barometer**'.
- The inflamed part is very sensitive and depicts all characters of inflammation.
- The reactivity pattern is exhibited well.
- Sensitivity attracts environmental stimuli; hence **modalities or sensory stimuli / inputs** are usually available.
- Sensitivity is also present at **mind level**.

## 14. Tremulous

- ‘Trembling’ is a marked characteristic of *Merc.* **Paralysis agitans – Parkinsonism** -come under pathogenetic action of *Merc.*
- Syphilitic expressions with a lot of pathologies at nerves, spinal cord, and brain resulting in **inco-ordination are responsible for tremulousness.**

## 15. Dropsical:

- Dropsy due to **anemia, hepatic, renal or cardiac** affections are covered by *Merc.*
- Edematous swellings in the affected parts characterize *Merc.*

## 16. Agile

- *Merc* is basically an 'active' group.
- We get rapid development of symptoms leading to destruction.
- When active disease processes are present, *Merc* group is indicated.
- It is less indicated for remnants or for exhaustion stage.
- That work is allotted to other groups like *Carbon* etc. Usually full-blown acute or chronic diseases are found in *Merc* group because of increased sensitivity and susceptibility.

## 17. Chaotic

- The aberrant immune response as expressed in **autoimmune disorders** give the character of chaos.
- Under severe infection, the system becomes prey and behaves in an eccentric way.
- **Tubercular miasma** actively dominates the scene.
- The agile character allows the system to go into chaos.

## **18. Debilitated**

The sway of disease processes under tubercular and syphilitic miasmatic activities depletes the energy.

The system can't continue for long and succumbs.

Anemia, malnourishments add to the state of debility.

Discharges produced do not ameliorate and further deplete the energy.

## **19. Syphilitic**

- *Merc* and syphilis are knot together since antiquity.
- *Merc* has in its pathogenesis all stages of syphilis-primary, secondary and tertiary.
- Low states and phagadenic condition from syphilitic poison.
- Destructive effects on nerves.
- It covers both acute and chronic phases.
- Discharges which system develops as defense do not help and syphilitic march is continued.



## Comments

- ✚ *Merc* group is an active group and hence must be considered in all inflammatory processes characterized by suppuration.
- ✚ But *once Merc action* has been over, (for example in a case of an abscess), it is *better to follow with either a constitutional remedy or a nosode*.
- ✚ *Sul* is a good remedy to complement *Merc*.
- ✚ *Merc* group *resembles Acid group as far as inflammation and destruction* is concerned.
- ✚ But *Acid* group is more debilitated.
- ✚ 'Struggle followed by exhaustion' is the theme with *Acid* group.
- ✚ In *Merc* group struggle is an active process. *Fight is the theme and it is continued till decomposition occurs*.
- ✚ But if this state appears, better to go to *Carbon* group of remedies.

- *Merc* group should be compared with *Spider group*. This group is *slyer, nervier* and has more *loss of control*.
- Previously *Merc* was used for all and sundry as a medicine.
- Now antibiotics and steroids are used. Now we do not get Mercurialised constitutions to treat homeopathically.
- But it is necessary to note that modern man is using Mercury more than his predecessors. And it needs to be antidoted by our potentised Mercury
- In this article an endeavor has been made to focus on essential features, analogical relations and evolution of *Merc* group through transitional phases.

## Constitution –

- persons with light hair, lax skin & lax muscles.
- Predominantly cover syphilitic affectoins, mainly lymphatic constitution.
- **AILMENTS From –**
- Suppression of discharges, abuse of crude mercury, bad affects of sugar, stings, vapors of arsenic or copper, suppressed syphilis, winter diseases.

- **Temperament** – easily frightened, hurried & rapidity.
- **Miasm** – syphilis, but traces of psora & sycosis are also found.
- **Thermals** – human barometer.
- **Diathesis** – scrofulous diathesis.



- Characteristic symptoms –
- Mind –
  - sluggishness,
  - incomprehension
  - restlessness
  - weak memory
  - mistrustful

- **Sphere of action –**
- mainly act on glands, bones, cns.
- Glands – it acts on lymphatic capillaries, it diminishes prostrates & paralyzes them & producing irritability.



- The symptoms of the solubilis, obtained by regular proving, and the effects of the vivus, gathered from toxicological reports carefully sifted and clinically verified, are sufficiently similar to be placed under one arrangement.
- Virtually the action of the two remedies appears to be the same, and they have not always been distinguished in clinical reports, but in all known instances the symptoms of the two preparations are rendered distinguishable by the letters s. and v. ---- Herring guiding symptoms

- I do not know enough to separate them (merc-vivus, merc- sol ) symptomatically. The provings have been separately placed in allen"s encyclopaedia, I have not been able to see any essential deference between them – Farrington's clinical m.m.
- Merc-sol is not a pure merc preparation, it contains ammonia & nit-acid.

- Poisoning
- 1<sup>st</sup> phase
- Acrid metallic taste & feeling of constriction of throat.
- Hoarse voice, difficulty in breathing
- Hot burning pain in the mouth followed by vomiting
- Diarrhoea, blood stained stools & tenesmus.
- Circulatory collapse, nervous symptoms—ataxia, delirium, restriction in visual field.

- 2<sup>nd</sup> phase ---
- Begins 1 to 3 days if person survives
- Glossitis, ulcerative gingivitis- 24 to 36 hrs
- Severe inflammation, loosening of teeth & necrosis of jaw.
- Renal necrosis-2 – 3 days
- Poly urea, albuminuria, uraemia, acidosis
- Desentery, ulceration of colonic mucosa & haemorrhage.

- Fatal dose –1 to 2 grms
- Fatal period– 3 to 5 days
- Tt – give egg- whites, milk or animal charcoal to precipitate mercury.

- **General sphere** –
- 1. acridity – excoriation, burning, stinging.
- 2. pains – boring, gnawing, cutting, tenesmus, gripping
- 3. chilliness – creeping.
- 4. debility – emaciation – faints – anaemia.
- 5. discharges – slimy, foul, acrid, thin, thick, yellowish – green, bloody, oedema, anasarca, ascites.
- 6. Perspiration – stains yellow, sour.

- 7. salivation – thirst, dryness.
- 8. tremors – intention, static, athetoid.
- 9. mm, glands, skin, cellular: -- inflammation, induration, exudation, suppuration, cracks, ulceration, necrosis, gangrene, cancer.
- 10. fevers – remittent, septic.
- 11. mouth & throat – colds, ascending.
- 12. liver – yellowness, biliousness.
- Cause –
- suppression, ear- discharge, foot – sweat



- **Aggravations –**
- Heat + cold: changing, drafts – head, cold damp, cloudy, autumn.
- Night, sweating – during & after
- Lying on rt side, except – dyspnoea
- Sleep, loss of, during salivation
- Swallowing – throat.
- Dentition
- Sweets, coffee

- **Amelioration** –
- moderate temp, altitude,
- Sleep, rest.
- Mind – restless, hasty, irritable- < contradiction.
- ☺ Violence – homicidal.
- ☺ Impulsive – suicidal, homicidal
- ☺ Imbecile, idiot, stammering ↔ tremors.
- ☺ Anxious, sad- fears – lascivious.
- ☺ Delusion- hallucinations – mania.

- P – q – r – s
- Icicles – nose
- Pruritus vulvae < urine
- Sweats with anxiety
- Milk, breast – m.c , virgins
- merc -- cor
- Intensified mercury
- Pain, burning, constriction
- Concomitant – vesical tenesmus
- thirst

- **MERCURIUS -- Quicksilver**
- In bone diseases, **pains worse at night**; glandular swellings with or without suppuration, but especially if suppuration be too profuse (Hep., Sil.).
- Profuse perspiration ***does not relieve***; may even increase the suffering
- Catarrh: with much sneezing; fluent, acrid, corrosive; nostrils raw, ulcerated; yellow-green, fetid, pus-like; nasal bones swollen; < at night and from ***damp weather***.
- Toothache Crowns decay, roots remain
- ***fetid, coppery, metallic-tasting saliva***.
- Tongue: **large, flabby, shows imprint of teeth**
- Mumps, diphtheria, tonsillitis with ***profuse offensive saliva; constant desire to swallow***,
-



- Dysentery: **stool slimy, bloody , *with colic and fainting***
- ***leucorrhoea itching with rawness; always worse at night,***
- Mammae painful, ***ulcerate at every menstrual period***
- **Relations.** - Follows well: after, Bell., Hep., Lach., Sulph., but should not be given before or after Silicea.
- If given in low (weak) potencies hastens rather than aborts suppuration.
- **Aggravation.** - **At night**; wet damp weather (Rhus); in autumn, warm days and cold, damp nights; lying on right side; perspiring. Mercury is < by heat of, but > by rest in, bed. Arsenic is > by heat of, but < by rest in, bed.

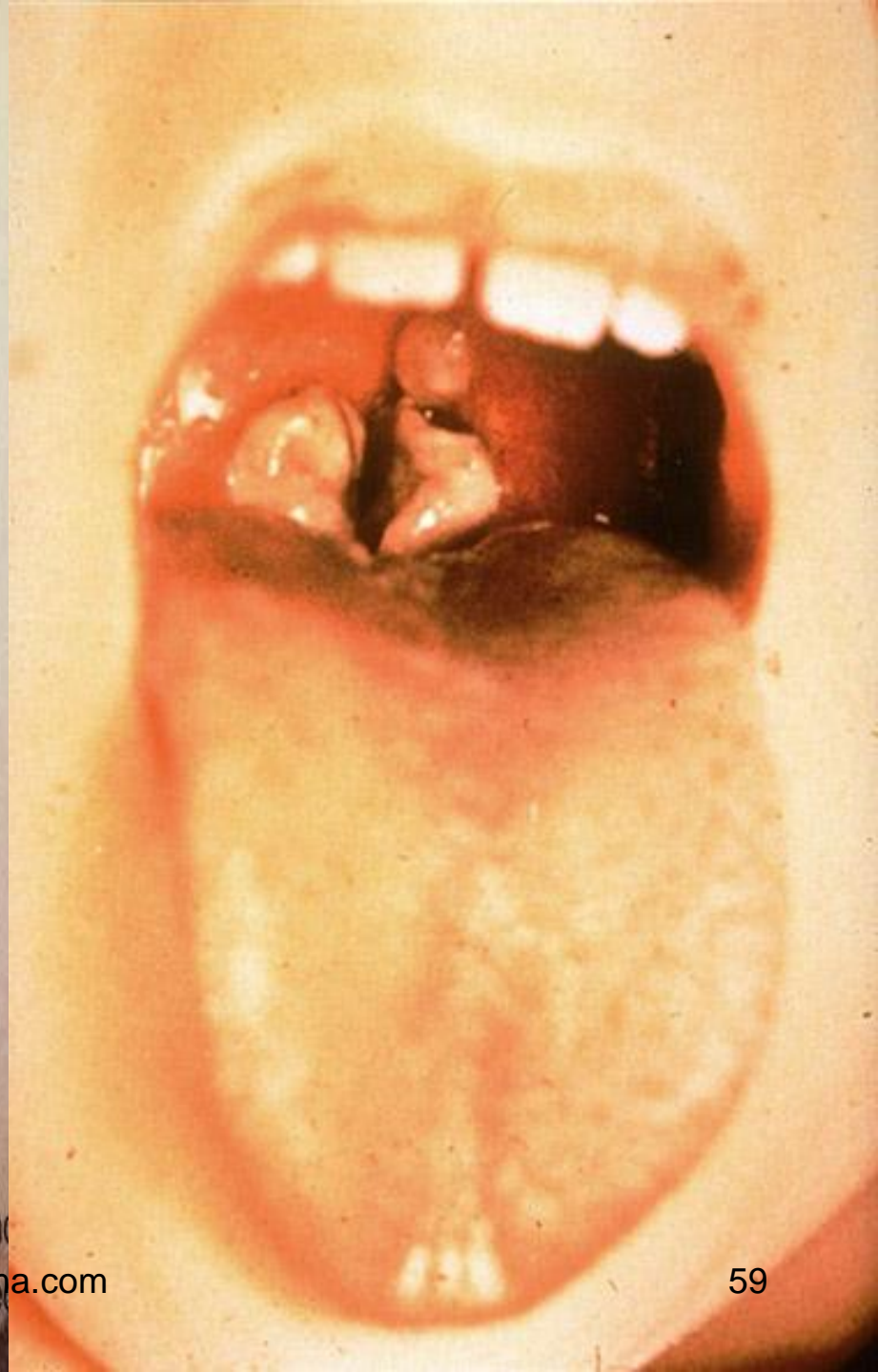
# **Mercurius Aceticus ( Sub acetate of Mercury).**

- Mercurous acetate  $\text{HgC}_2\text{H}_3\text{O}_2$ . Trituration.
- The throat lacerations were < by coughing rather than by swallowing. Cold water < the inflammation of the penis; bathing with tepid water .
- the menses which came on at the new moon, four days before their proper time.  
"Pressure in lower sternum and dyspnoea on standing erect". "Margins of ulcers become painful." Hansen says that "burning in the
- urethra burning during urination and at other times" has been confirmed in practice;



- **MERCURIUS BINIODIDE**
- Mercurius iodatus ruber
- *Biniodide of Mercury Mgl5*
- Diphtheritic and glandular affections ***of left side***; fauces dark red; solids or liquids painful when swallowing; exudation slight, easily detached; cases attending epidemic scarlet fever, ulcers on fauces or tonsils; glands enlarged; greenish tough lumps from pharynx or posterior nares. Tubercular pharyngitis.





For reproduction of slides, acknowledgement of the editors and  
their clinical departments is appreciated [www.similima.com](http://www.similima.com)

- ***Merc. biniodatus cum Kali iodatum***
- It causes profuse discharge of watery mucus from the nose with sneezing, coughing and watering of the eyes. Take a patient who cannot ride in an automobile winter or summer. It is a condition that conforms to this preparation of *Iod.*, *Merc.* and *Kali*. The combination consists of one equivalent of red oxide of *Merc.* and 2 equivalents of *Iod.* of Potassium. Acute facial paralysis from cold (*Merc. sol.* and *corr.*) come under this remedy. Remember to look for the *Merc.* tongue with the *Kali* expectoration.

- **MERCURIUS CORROSIVUS**
- ***Corrosive sublimate HgCl<sub>2</sub>***
- Diseases of men, syphilitic; ulcers, with corroding, acrid pus; Bright's disease.      Dysentery and summer complaints of intestinal canal, occurring from May to November.      Tenesmus: of rectum, ***not > by stool*** (< by stool, Nux); incessant, persistent; stool hot, ***scanty, bloody, slimy, offensive***; shreds of mucous membrane and terrible cutting; colicky pains.      Tenesmus: of bladder, with intense burning in urethra; urine hot, burning, scanty or suppressed; in drops with great pain; bloody, brown, brick-dust sediment; albuminous.      Gonorrhoea: second stage, ***greenish discharge***, < at night; great burning and tenesmus.

-

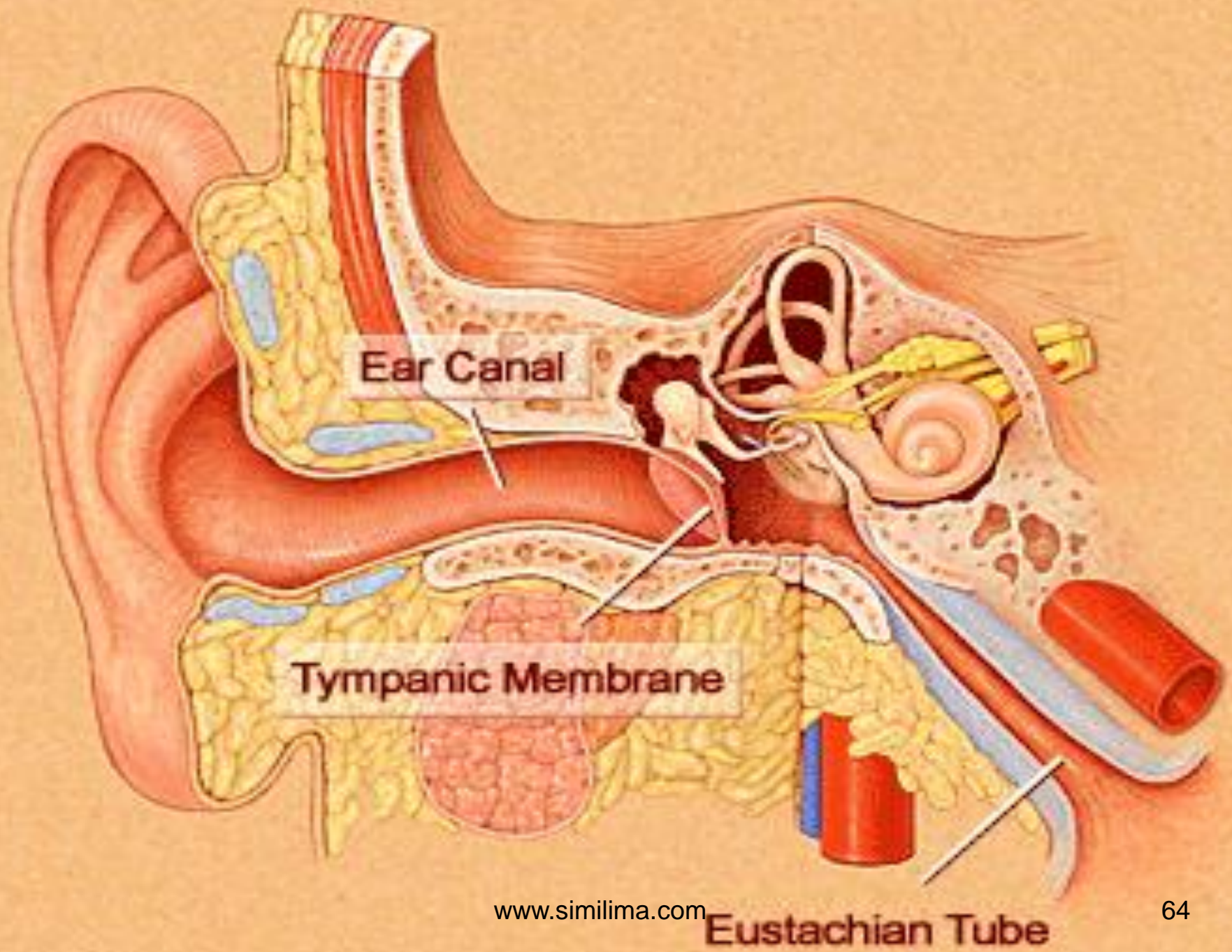


- **MERCURIUS CYANIDE** -- Cyanide of Mercury
- Hg(CN<sub>2</sub>)
- Malignant diphtheria with ***intense redness of fauces*** and great difficulty of swallowing; pseudo-membranous formation extends all over fauces and down throat; putrid, gangrenous diphtheria, with phagedenic ulceration; membranous croup. ***Great weakness; extreme prostration;*** cannot stand up from weakness. When it corresponds to the genus epidemicus, like every other remedy, is effective as a prophylactic.
-

- **MERCURIUS DULCIS Calomel  $Hg_2Cl_2$**
- Catarrhal affections of mucous membranes, especially of the eye and ear. ***Catarrhal inflammation of middle ear*** (Kali m.). ***Eustachian tube closed***; catarrhal deafness and otorrhoea in psoric children; deafness of old age (Kali m.). Acute affections of prostrate after maltreated stricture. Deafness and catarrhal affections of nares, throat, and pharynx, from mercurial amalgam fillings. Diarrhoea: of children; stools grass-green; like chopped eggs; profuse, causing soreness of anus.

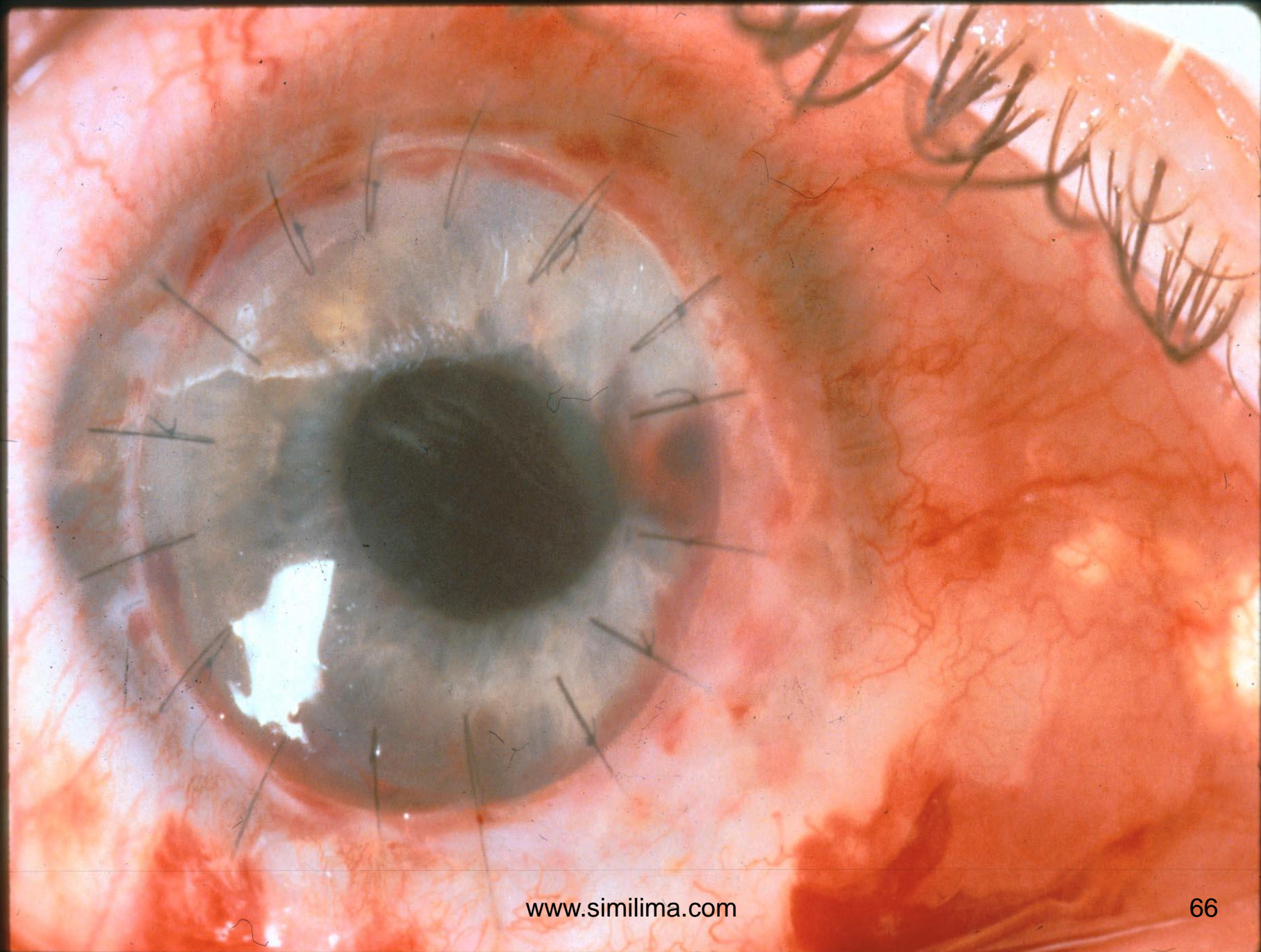
•





- ***Merc. nitricus*** is to be studied when we find conditions suggesting *Merc.* and at the same time exhibiting the sharp sticking pains of *Nitric acid*. Pustular conjunctivitis and keratitis with burning lachrymation, photophobia and the aforesaid sharp sticking pain calls for *Merc. nit.* Coldness also predominates under this remedy, with a flushed face. The pains are intolerable, driving the patient to thoughts of suicide.





Mercurius Praecipitatus Albus  
White Precipitate.  
Mercurammonium chloride.  
 $\text{NH}_2\text{HgCl}$ . Trituration.

The symptoms of Merc. proecip. alb. are taken entirely from poisonings. The

- most peculiar symptoms are: Green tongue; bilious stools scalding anus; and
- the old-mannish appearance of a child poisoned with it.





**Mercurius Praecipitatus Ruber.** Red precipitate.

Red Oxide of Mercury.  $\text{HgO}$ .

Gonorrhoea when the urethra is felt as a hard string. Indurated ulcer, deep, with red, hard edges and especially when spreading. Syphilitic iritis when the pains have ceased. Pemphigus

- neonatorum and intertrigo syphilitica. Eczema, acute or chronic, much sero-purulent or purulent exudation, also externally (in ointment 1 to 40 of prepared lard).
- Tinea tonsurans, circinata and sycosis. Folliculitis barbae (internally and externally).



**SFS**







- **MERCURIUS SOLUBILIS Hahnemann's Soluble Mercury    *Block oxide***

- 

Otorrhoea: bloody, offensive discharge, with stabbing tearing pain; < right side, at night and lying on affected side.

- Furuncles and boils in external meatus (Pic. ac.).
- Polypi and fungous excrescences in external meatus (Mar. v., Thuja).
- ***Acrid nasal secretion***, nostrils, red, raw, ulcerated.
- Epistaxis: when coughing; ***at night during sleep***; hangs in ***a dark clotted string*** from the nose, like an circle.
- Gonorrhoea: with phymosis or chancroids; ***green discharge, < at night***; urging to urinate; intolerable burning in for part of urethra when passing last few drops; prepuce oedematous.
- Chancre: primary; regular indurated Hunterian with phymosis or paraphymosis;
- Hahnemann's remedy for syphilis and diseases of the genito-urinary tract. Is rarely indicated if the tongue is dry.
- Disease of the skin; intolerable biting, itching, over body, as from insect bites, < in evening and from warmth of bed; becomes pleasant on scratching.

# **Mercurius Sulphocyanatus**

- Sulphocyanide of Mercury.
- (Pharaoh's Serpents.)
- Hg (SCN)<sub>2</sub>.

Diphtheria.

Oesophagus, stricture of

Extreme redness of throat with white membrane on tonsils.

Most violent burning in fauces.

Heat and constriction in oesophagus, with difficulty in swallowing and burning

in epigastric region and nausea.

- **MERCURIUS SULPHURICUS** --- Sulphate of Mercury  
HgSO<sub>4</sub>
- Hydrothorax, if occurring from heart or liver diseases; dyspnoea, has to sit, cannot lie down. Extremities swollen; stool loose, watery, causing severe burning and soreness; burning in chest.
- "When it acts well it produces a profuse, watery diarrhoea with great relief to the patient; it is as important as Arsenicum in hydrothorax" - Lippe.
- **Relations.** - Compare: Ars., Cinnab., Dig., Sulph.

## Cinnabaris

- Mercuric Sulphide.
- Red Sulphide of Mercury.
- Hg S.

corresponds to sycosis as well as to syphilis, and to combination of the two.

- In warts on the prepuce it is more specific than Thuja; especially for fan-shaped warts.
- In addition to dysenteric symptoms there is obstinate constipation, stools hard and too large. Protrusion of anus during stool. Formication as from a large worm. Little pimples round anus with burning and itching.

## Antidotes ---

- Hepar-sulph – the anxiety, distress, suicidal mood & also bone pains, sore mouth, ulcers, gastric symptoms.
- Nit-acid – lowertissues are attacked, periosteum, bones & fibrous tissue, ulcers in throat, complicated sec-syphilis.  
<night, damp weather.
- Cinchona – chr. ptyalism.
- Dulcamara – salivation <damp weather
- Aurum – depression, suicidal mania, caries of bones- palate & nose.

- Kali- hydro iodicum— merc poisoning, pt sick due to syphilis & mercury – lower order of tissues are involved, upper lip sore & raw, repeated catarrhs.< damp, cool air.
- Kali-chloricum – gums are spongy, bleed easily aphthous ulcer.
- Asaoetida – bone abscesses, extreme sensitiveness around the diseased portion of bone, iritis.

- Mezereum – excellent when invaded nervous system & neuralgia has developed. ( face, eyes, body).
- Stillingia– broken down constitution with periostial inflammations & nodes on the bones.

# References

- 1. Sankarans schema
- 2. ICR symposium part – 1
- 3. Homoeopathy & the elements- jan scholten
- 4. Group study – DR.J.D.Patil
- 5. Farrington clinical materia medica
- 6. Herrings guiding symptoms
- 7. Allen's key notes
- 8. Similima .com
- 9. Clarke clinical m.m.



• Thank you

